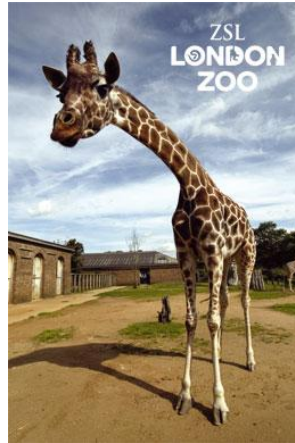


## London Zoo, The Council Room

### London Zoo

London Zoo is the world's oldest scientific zoo, opening in 1827. It is thought by many to be the place where the word "zoo" was first coined.

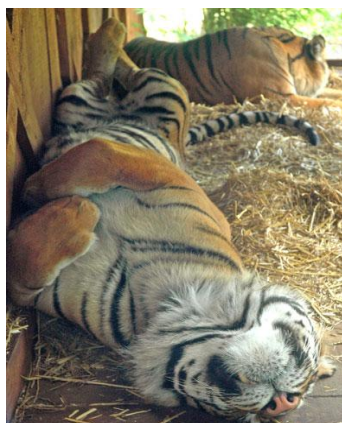


### London Zoo Facts

- ❖ London Zoo houses over 755 species of animals, and 15,104 individuals
- ❖ The Reptile House at the Zoo was the set for the Burmese Python scene in Harry Potter & the Philosopher's Stone
- ❖ The Zoo aims to recreate the animals' natural environments by replacing cages with enclosures to give the animals a better lifestyle & the visitors a more realistic experience
- ❖ London Zoo's food bill includes 90,000 ants daily (for 3 anteaters), 29 tonnes of bananas a year, 15,860 lettuce heads a year and 250kg of honey a year
- ❖ The Zoo's first giant panda, Chi Chi, arrived in 1958, and became the inspiration for the World Wildlife Fund logo



The animals you can hope to spot at London Zoo include giraffes, zebras, lions, red pandas, pygmy hippos, giant anteaters and many, many more!



**Stick around until 2pm to see the daily penguin feeding!**

### Address:

ZSL London Zoo  
Regent's Park  
London  
NW1 4RY



### Tube:

Camden Town Station (Northern Line)  
Regent's Park Station (Bakerloo Line)  
Baker Street Station (Jubilee, Bakerloo & Metropolitan lines)

### Main Line Stations:

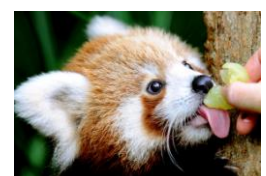
Camden Road

### Bus:

274 from Marble Arch & Baker Street to Ormonde Terrace  
C2 from Oxford Circus or Great Portland Street to Gloucester Gate

### Contact:

Emma Caswell  
0845 200 7829  
emma.caswell@eShareUK.com



# Directions and Map

## London Zoo, The Bartlett Room

The Council Room is located here, by the Main Reception

London Zoo Grounds Map



Map of the area surrounding London Zoo

